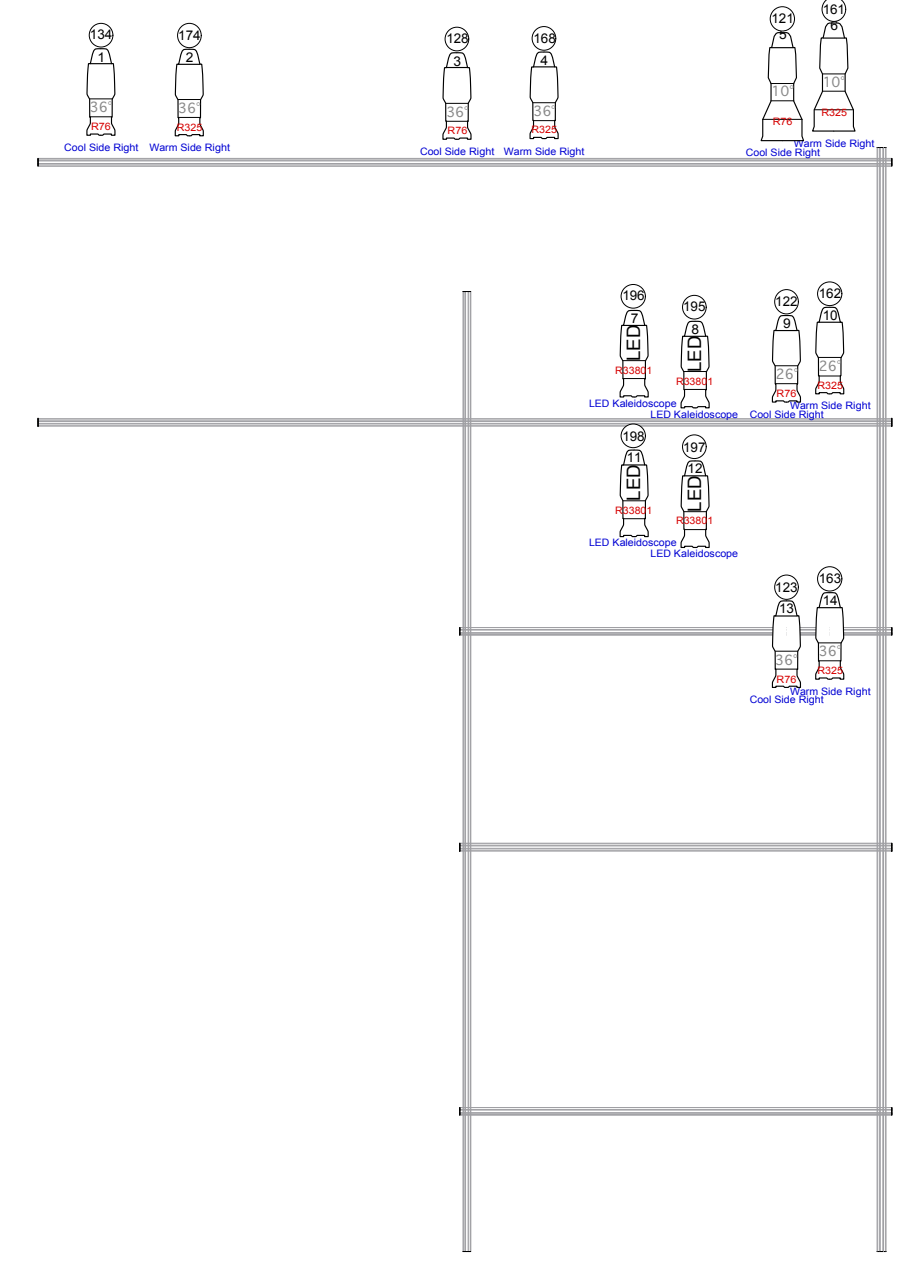
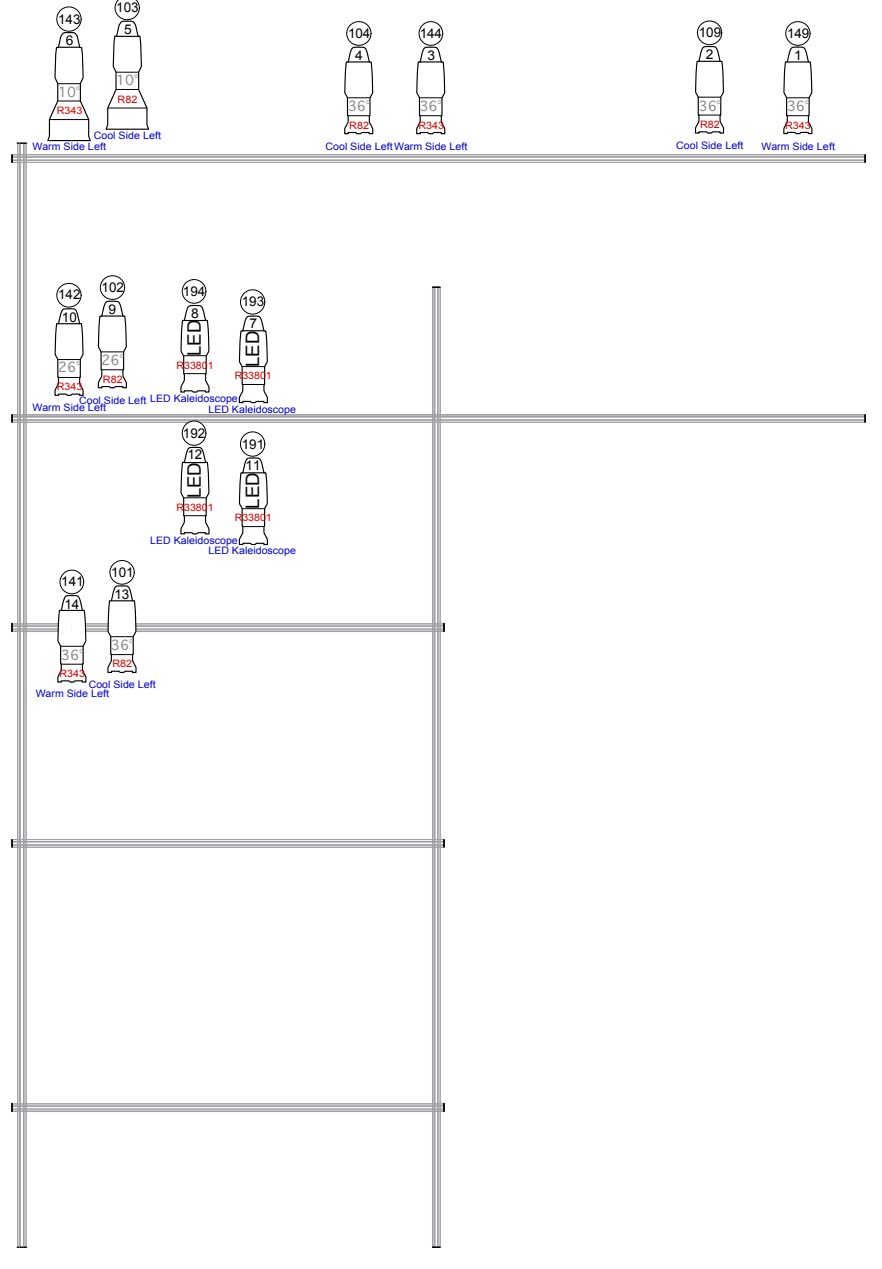


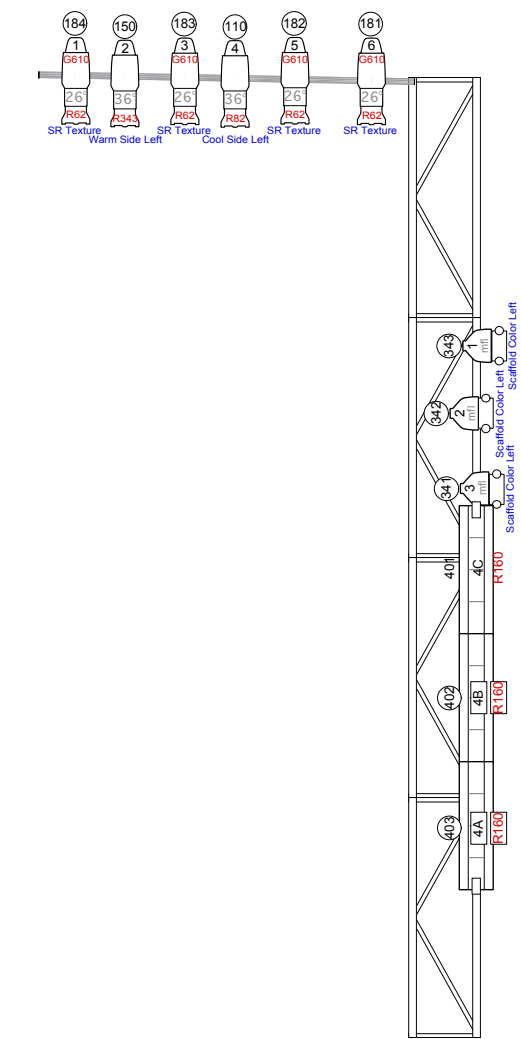
Box Boom Right



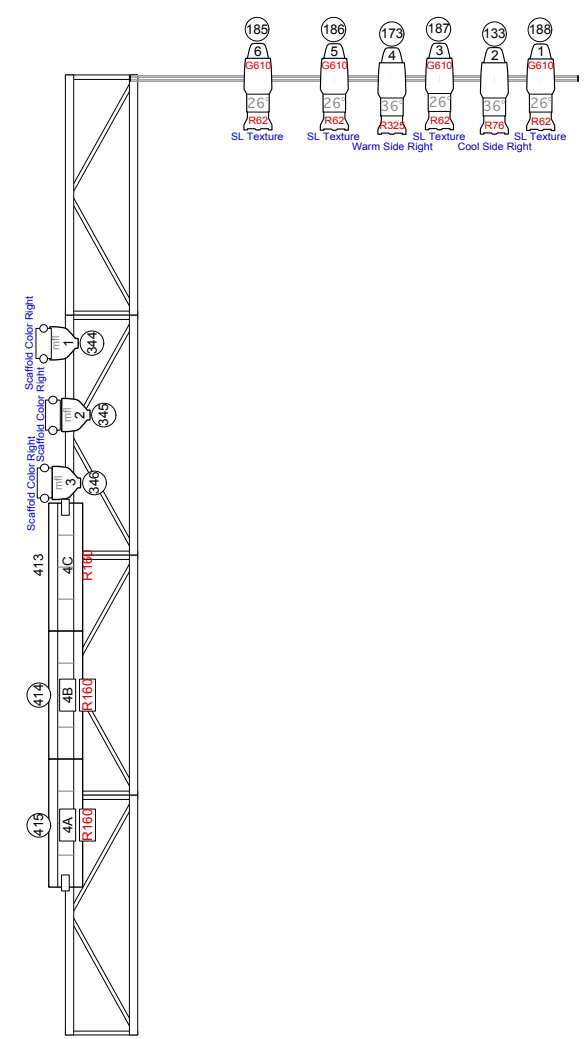
Box Boom Left



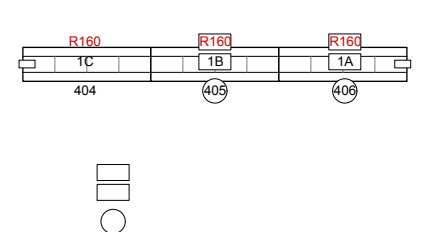
SR Vertical Truss



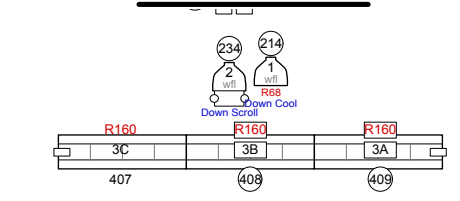
SL Vertical Truss



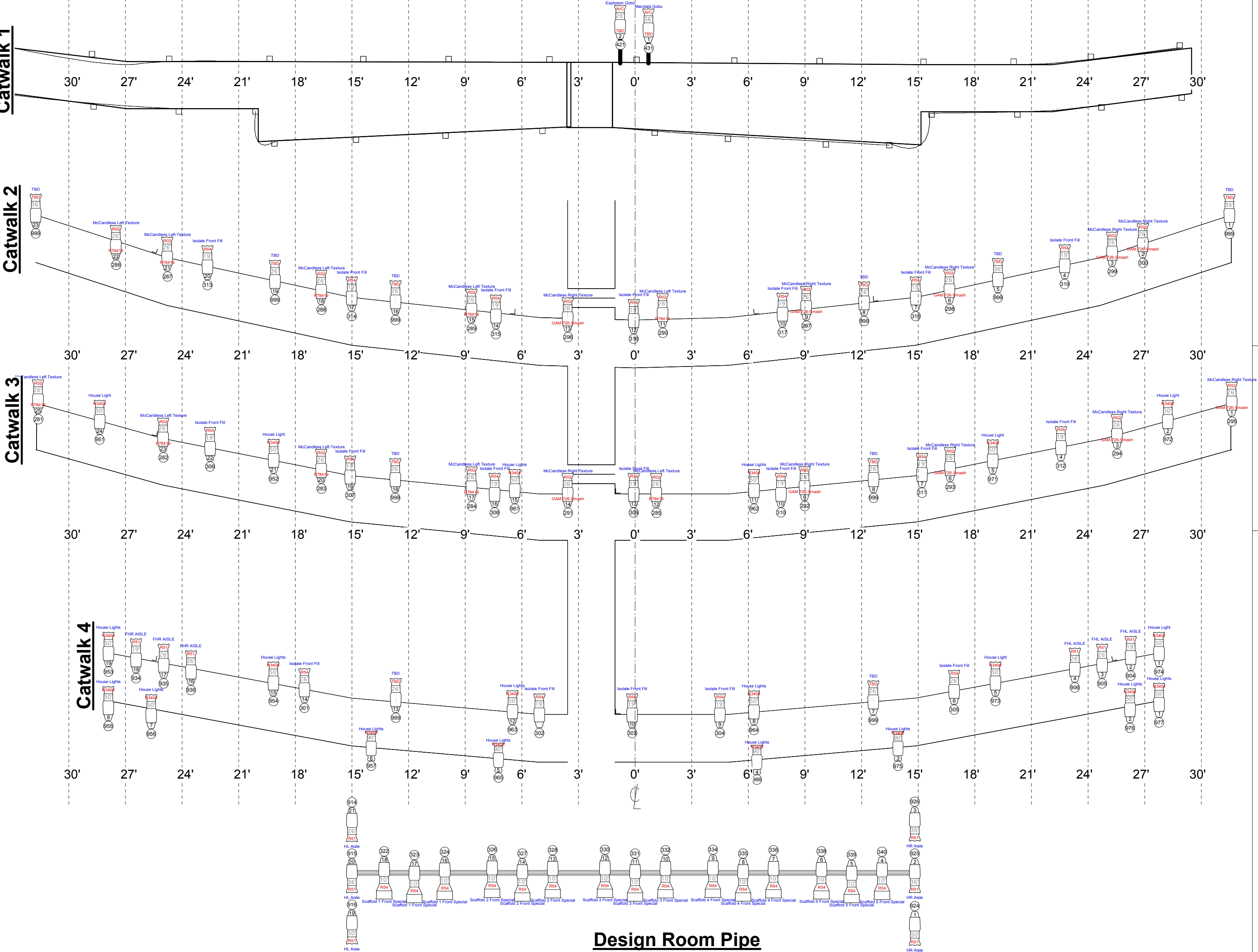
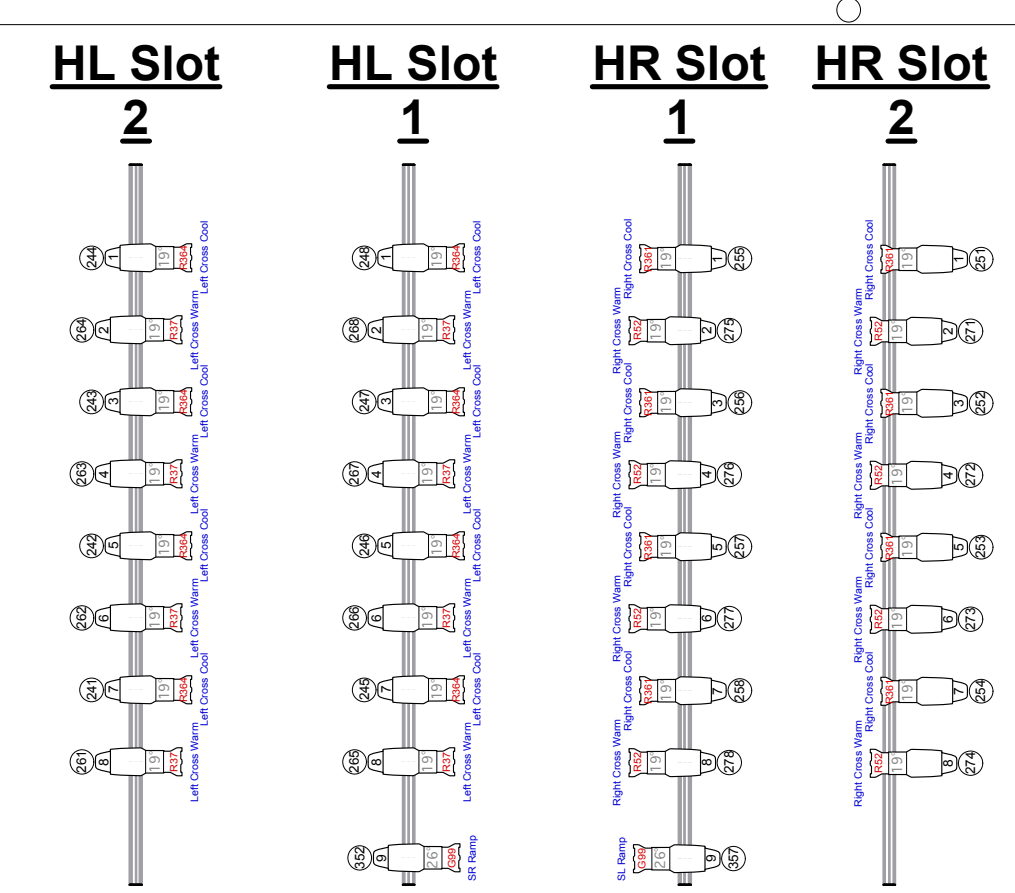
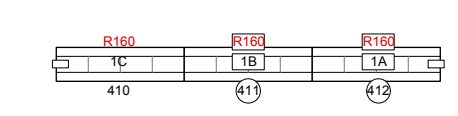
Scaffold 1



Scaffold 3



Scaffold 5



# Instruments

- 19 @ Source 4 10deg
- 65 @ Source 4 19deg
- 84 @ Source 4 26deg
- 80 @ Source 4 36deg
- 41 @ Source 4 50deg
- 4 @ Source 4 90 Deg
- 8 @ Source 4 36deg LED
- 4 @ Source 4 50deg LED
- 36 @ S4 PAR WFL
- 6 @ S4 PAR MFL
- 5 @ Altman PAR56 Strip
- 9 @ 3 Cell Sky Cyc
- 6 @ 2 Cell Sky Cyc
- 2 @ Studio Spot 575
- 3 @ Studio Color 575
- 2 @ Altspot

# Accessories

- 4 @ I-Cue Mirror
- 4 @ DMX Iris
- 25 @ 7.5" Color Scroller



**Explosion** 1/4"

Lighting Designer <b>Aaron J. Crosby</b>	Venue <b>Tomlinson</b>	Scale 1/4"
Assistant Lighting Designer <b>Dylan Wallace</b>	Designer <b>Brandon McShaffrey</b>	Plate 2 OF 3
Stage Manager <b>Nicole Rolo</b>	Stage Technician <b>Fred Duer</b>	